

# TRAVERSER-E2



The Traverser-E2 utilises Traverser concepts to provide an efficient means of making quality samples or as a low cost Traverser for simple applications.

No software is required for the simple set-up, stroke length is adjustable by potentiometer, acceleration and speed are fixed. One print go signal is issued per stroke on the outward stroke, multiple messages can be produced by repeating the message on the printer.

Traverser-E2 is available in 2 different stroke lengths as standard, 150mm or 300mm stroke.

The Traverser-E2 is available with a choice of mountings to mount onto either 25x25mm rail or 32mm diameter rail.

Traverser-E2 is particularly suited to applications where only 1 product has to be printed at 90 degrees to line travel or where an operator manually loads items into a jig.

## SPECIFICATION

Type: Traverser-E2 - Part No T10234

Maximum Stroke: 150mm(125mm printing+25mm accel/decel)

Minimum Stroke: 30mm (5mm printing + 25mm accel/decel)

Construction: Anodised Aluminium/Stainless Steel

Type: Traverser-E – Part No T10235

Maximum Stroke: 300mm(275mm printing+25mm accel/decel)

Minimum Stroke: 30mm (5mm printing + 25mm accel/decel)

Construction: Anodised Aluminium/Stainless Steel

## PERFORMANCE

Speed (print stroke): 200mm/sec

Acceleration (print stroke): 1600mm/sec<sup>2</sup>

Cycle Time @ max stroke (T10234): 2.1sec (Move out and return)

Cycle Time @ max stroke (T10235): 4.2 sec (Move out and return)

Cycle Time @ min stroke: 0.7sec (Move out and return)

Duty Cycle: 100%

## ENVIRONMENT

Temperature range: 5 - 45°C

Humidity: 10 - 90% RH (non condensing)

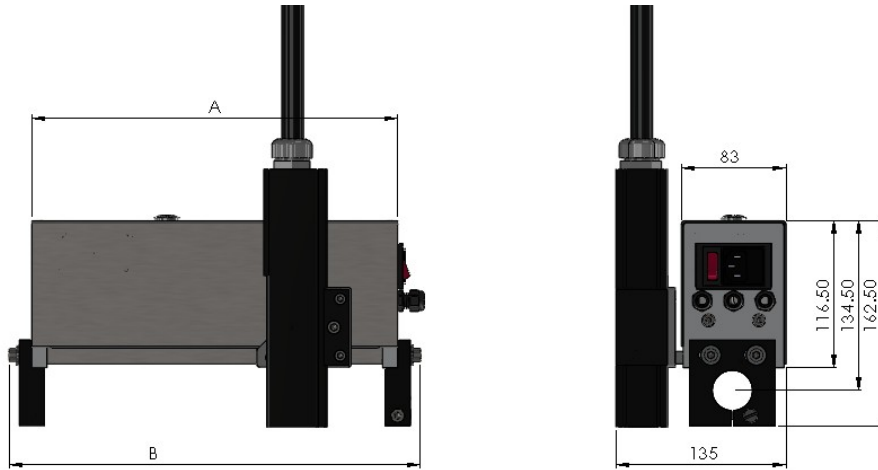
Electrical Supply: 120–230Vac, 50/60Hz, <0.2A

Protection: IP40

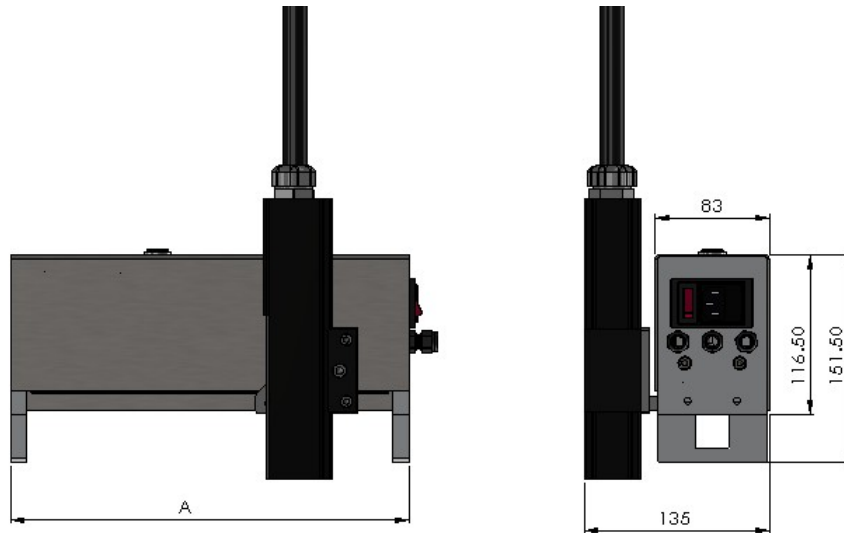
Operating Noise: <70 dB(A)

## DIMENSIONS

Traverser fitted with 32mm diameter clamps:



Traverser fitted with 25mm square clamps:



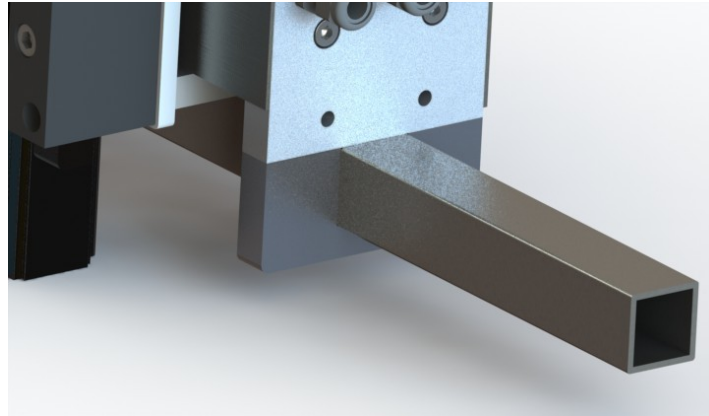
Part Number	Stroke (mm)	A (mm)	B (mm)
T10234	150	290	326
T10235	300	440	476

## ACCESSORIES

### MOUNTING BRACKET OPTIONS

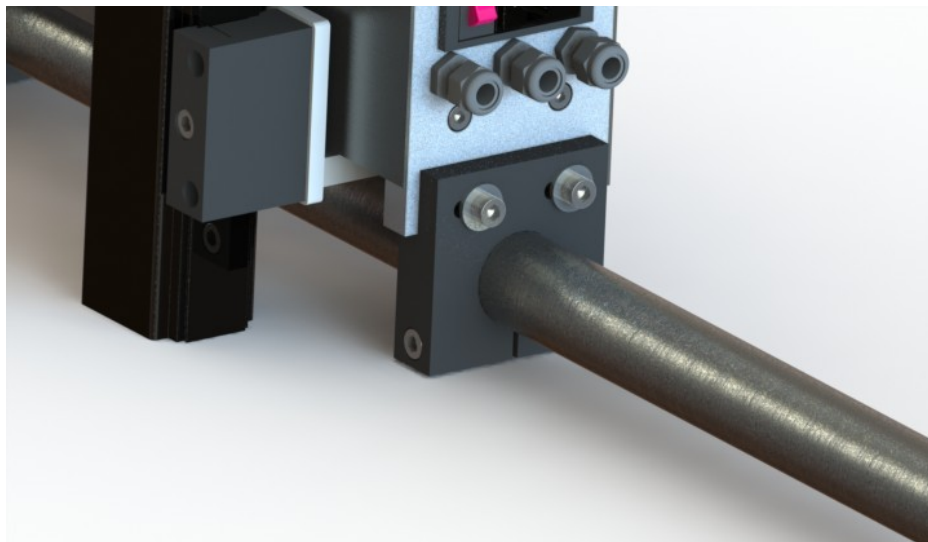
Mounting brackets are available to mount the Traverser-E2 on either 32mm diameter round tubing or 25mm square tubing.

- 32mm diameter brackets mount directly to standard Domino mounting system.
- 25mm square brackets mount onto mounting system available separately.



Brackets for 25mm square Part No T10131

The 32mm diameter brackets allow 10mm of perpendicular movement which is useful for fine adjustment of Traverser position. Slots are provided in the brackets to accept locking rings (Domino Part No 5-0161129) these give additional anti-rotation support.



Brackets for 32mm diameter Part No T10185

## MOUNTING SYSTEM

A 25mm rail mounting system is available as a goalpost kit in 2 different widths to suit all stroke lengths.

T10161 Goalpost system 1m wide.

Contents:                3x 1 metre long 25x25mm stainless steel tubes.  
                              2x 90deg clamp blocks.  
                              2x pedestal clamps.  
                              4x end caps.

T10162 Goalpost system 1.5m wide.

Contents:                2x 1 metre long 25x25mm stainless steel tubes.  
                              1x 1.5 metre long 25x25mm stainless steel tubes.  
                              2x 90deg clamp blocks.  
                              2x pedestal clamps.  
                              4x end caps.

Individual mounting system components and lengths of rail available on request.

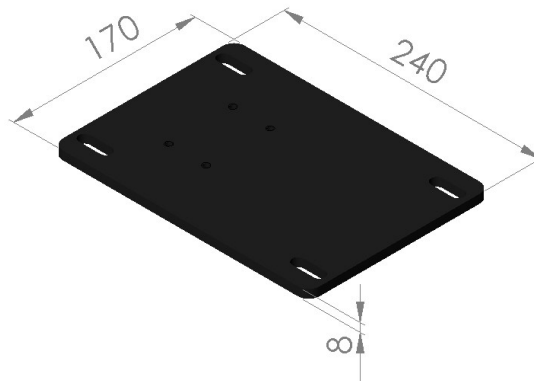


25x25mm Stainless Steel Goalpost System

## Mounting System Base Plates

Base plates are also available that fit beneath the pedestal clamps to allow a rigid connection to the floor or other surface. These plates are designed to be bolted to the floor or any other surface and have tapped holes to accept tube clamp connectors.

The plates incorporate slots that allow the position of the mounting system to be varied by  $\pm 10$ mm. These plates are suitable for use with Domino 32mm diameter floor/wall mount clamps (5-0161126) and 25mm pedestal clamps detailed above.



The Plates are available in 2 styles:

Part No T10206, manufactured from 8mm thick steel plate and finished with a durable black powder coated finish.

Part No T10250, manufactured from 8mm thick grade 304 Stainless Steel

## Foot-switch

If the Traverser is to be operator triggered, a simple foot-switch is available. This switch can also be hand operated if necessary.

Foot-switch Part No T10205.



## CONDUIT SUPPORT

The conduit support allows the print-head conduit to be supported and be free to move with the Traverser at the same time.

The Conduit Support kit consists of a polyurethane hanger, which can be adjusted to allow the conduit to be supported from different heights, a stainless steel adjustment collar, a stainless steel tensioning collar, a stainless steel snap ring to release the mounting and a stainless steel loop bracket. The loop bracket can be fitted to, for example the roof of the host machine.

There are additional components available to clamp the conduit support top mounting hook to 25mm x 25mm rail and 32mm diameter rail.

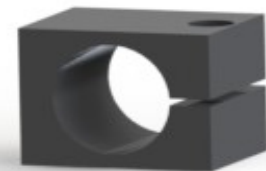
The polyurethane hanger is looped around itself and tensioned against the print-head conduit with the stainless steel tensioning collar.



Conduit Support Kit Part No T10208



25mm by 25mm Square Bar Conduit  
Kit Clamp Part No T10209



Diameter 32 Round Bar  
Conduit Kit Clamp Part No T10210